

Place Matters for Health

Brian Smedley

National Collaborative for Health Equity



Our Neighborhood Affects Our Health

Unhealthy Community

vs

Healthy Community

Unsafe even in daylight



Safe neighborhoods, safe schools, safe walking routes

Exposure to toxic air, hazardous waste



Clean air and environment

No parks/areas for physical activity



Well-equipped parks and open/spaces/organized community recreation

Limited affordable housing is run-down; linked to crime ridden neighborhoods



High-quality mixed income housing, both owned and rental

Convenience/liquor stores, cigarettes and liquor billboards, no grocery store



Well-stocked grocery stores offering nutritious foods



Our Neighborhood Affects Our Health

Unhealthy Community

vs

Healthy Community

Streets and sidewalks in disrepair



Clean streets that are easy to navigate

Burned-out homes, littered streets



Well-kept homes and tree-lined streets

No culturally sensitive community centers, social services or opportunities to engage with neighbors in community life



Organized multicultural community programs, social services, neighborhood councils or other opportunities for participation in community life

No local health care services



Primary care through physicians' offices or health center; school-based health programs

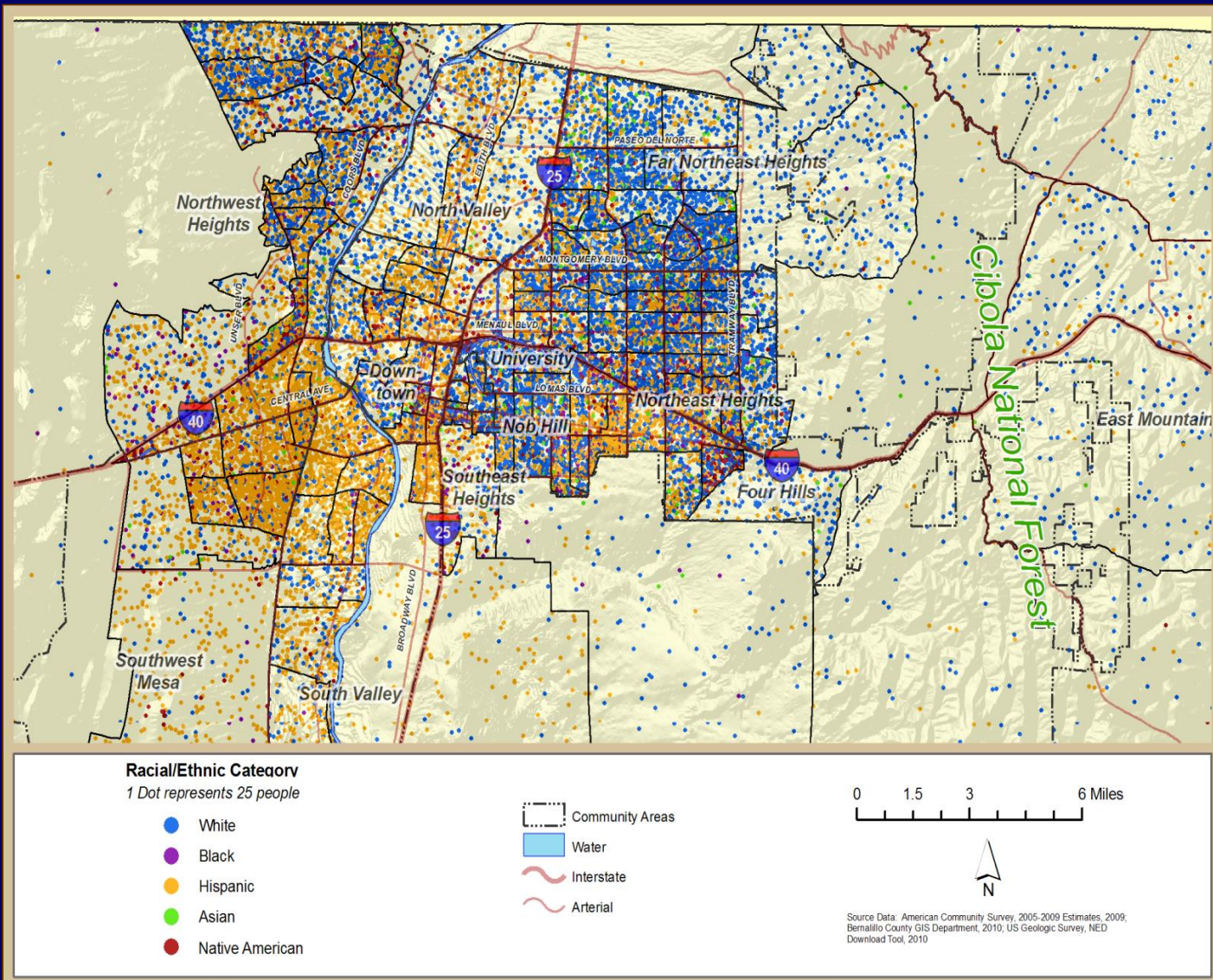
Lack of public transportation, walking or biking paths



Accessible, safe public transportation, walking and bike paths

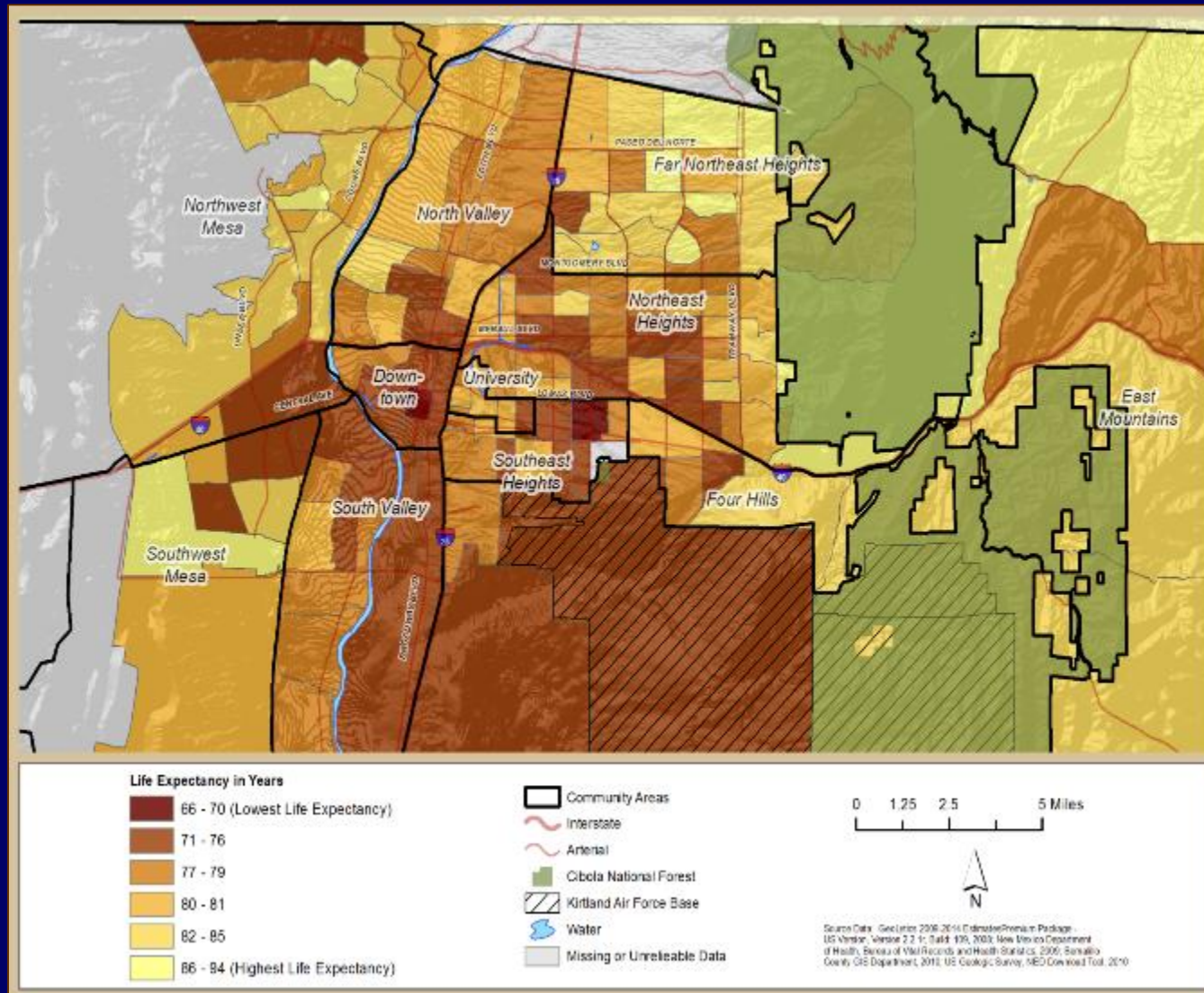
Community Health Equity Reports (CHER) – Documenting Risks to Health-Bernalillo County

Racial/Ethnic Distribution by Census Tract, Bernalillo County (2005-2009)



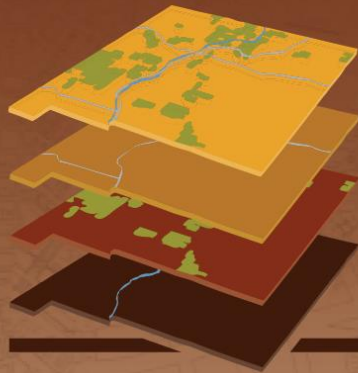
Community Health Equity Reports (CHER) – Documenting Risks to Health-Bernalillo County

Life Expectancy by Census Tract, Bernalillo County



New Mexico Community Data Collaborative

<http://nmcdc.maps.arcgis.com>



**NEW MEXICO
COMMUNITY DATA
COLLABORATIVE**