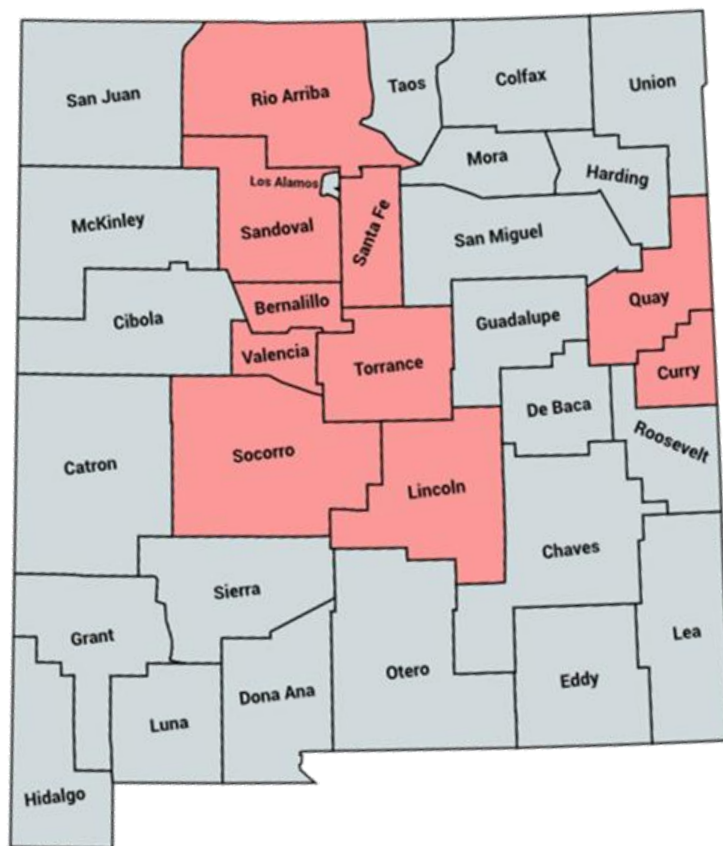
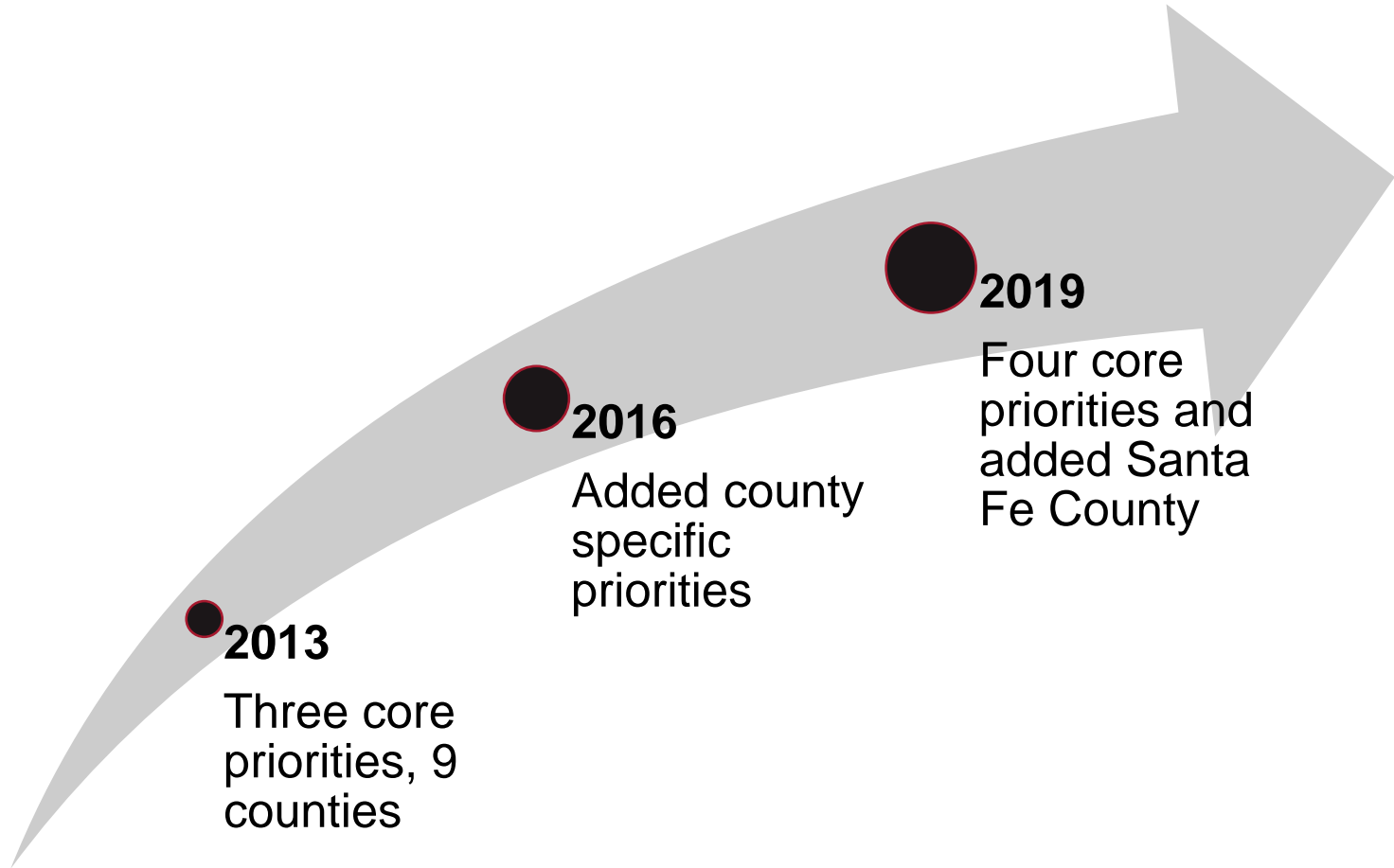


We focus on the counties where our hospitals serve the most people



Bernalillo
Curry
Lincoln
Quay
Rio Arriba
Santa Fe
Sandoval
Socorro
Torrance
Valencia

History: community health priorities



Community health priorities 2020-2022

Building conditions to thrive



BEHAVIORAL
HEALTH



SOCIAL
DETERMINANTS
OF HEALTH

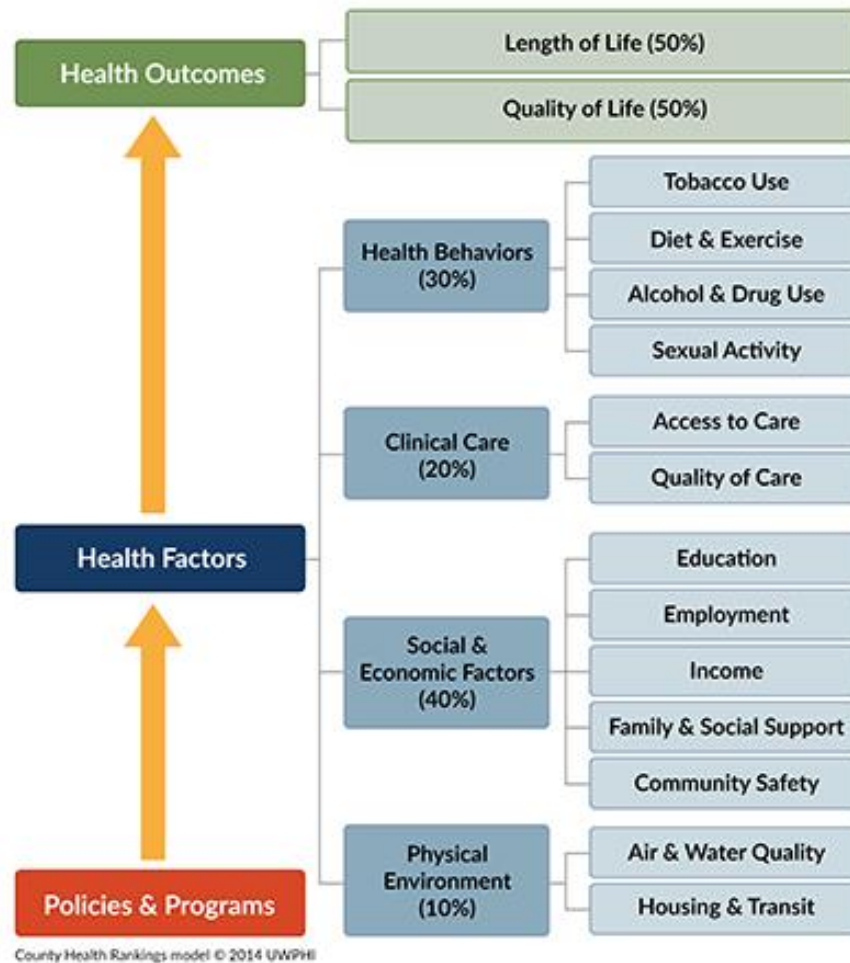


ACCESS TO
HEALTHCARE



HEALTHY EATING
AND ACTIVE
LIVING

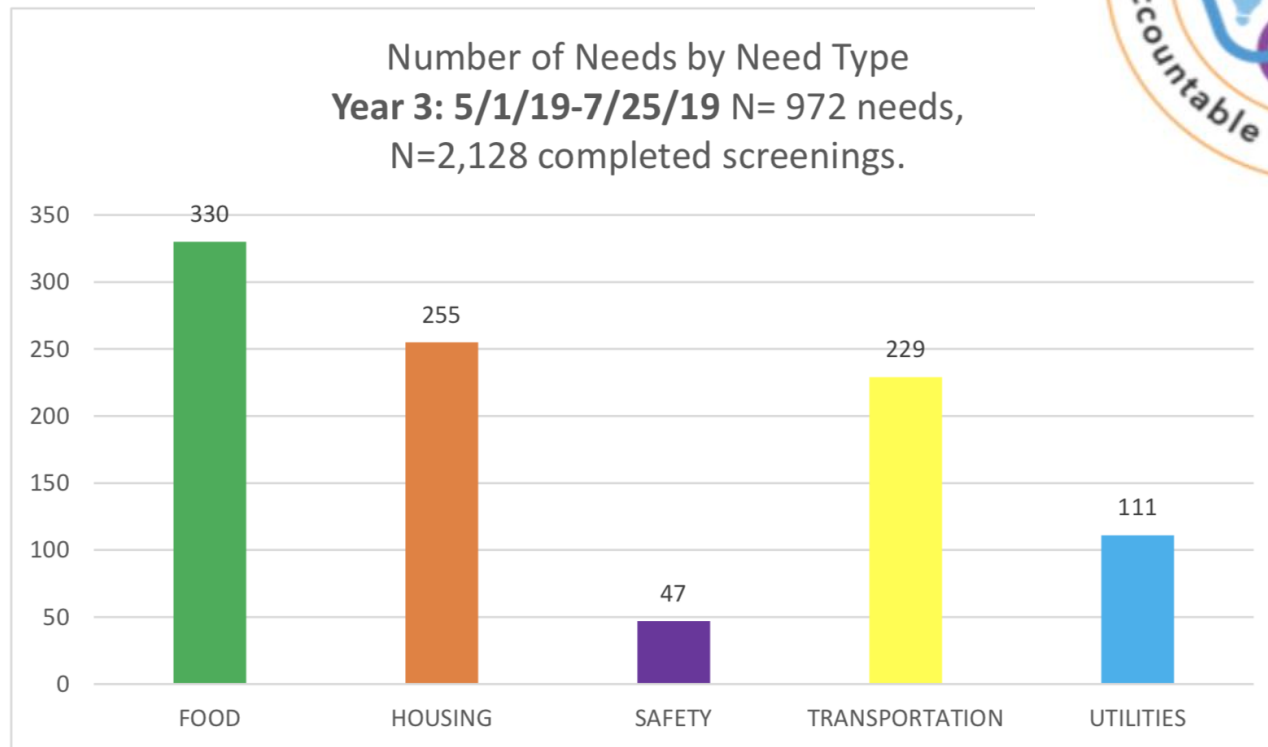
80% of health outcomes are determined by non-clinical factors



County Health Rankings Model (2018) Collaboration between University of Wisconsin Population Health Institute and Robert Wood Johnson Foundation Available at: <http://www.countyhealthrankings.org/county-health-rankingsmodel>



Health-Related Social Needs



Interpretation Notes: Number of needs identified through the screening process, includes both high-risk and low-risk patients. These are not mutually exclusive - patients may screen positive for more than one need. It is safe to assume that safety needs are being under-reported.



- 9,078 unique patients have been screened for Health-Related Social Needs since 9/24/18
- 4,321 (47.6%) patients reported at least one need
- 1,407 patients were identified as high-risk and 584 of those patients (42%) were enrolled in navigation
- 400 needs were resolved since 9/24/18

Free Healthy Meals

- 48,130 meals served to kids since 2016. 9,754 during summer, which is over 4k more than we did the entire school year last year.
- Rust Medical Center is starting September 1; funded through the Presbyterian Healthcare Foundation
- Santa Fe Medical Center is a new site

